

Float unit for RJ45 Test Connector

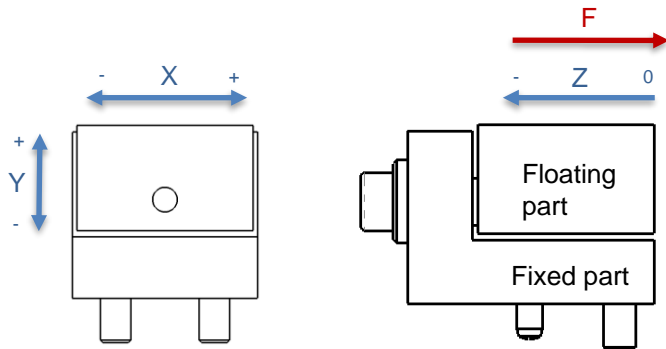
MA085139

BLUELEC
Part of JOT Automation

OVERVIEW

MA085139 is a float unit for Bluelec unshielded RJ45 test plugs, MA014781 and MA036427.

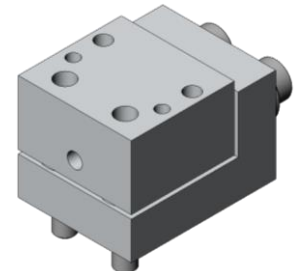
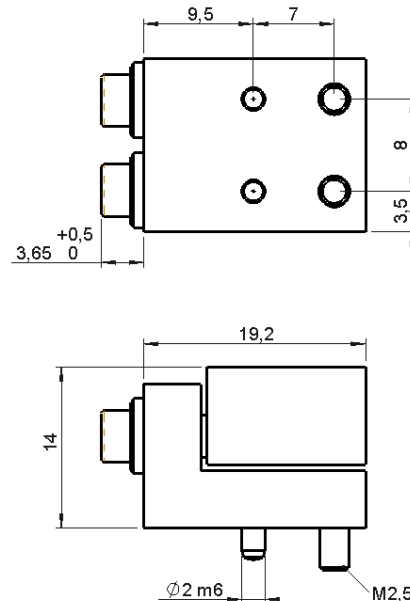
It compensates the possible misalignments between test system mechanics and DUT socket and enables smoother insertion of the test plug.



Default position of floating part is '0' for all axes.
Displacement of Z is needed to allow displacement of X and Y.

SPECIFICATIONS

Displacement Zmax	+0.0 / -0,5 mm
Displacement Xmax@Zmax	+/- 0,3 mm
Displacement Ymax@Zmax	+/- 0,3 mm
Spring force F @ Z0	~10N
Spring force F @ Zmax	~14,5N



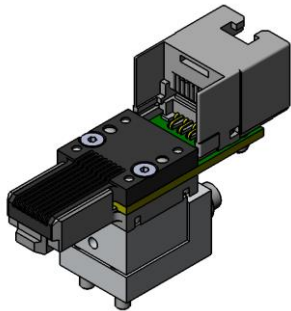
Float unit for RJ45 Test Connector

BLUELEC
Part of JOT Automation

MA085139

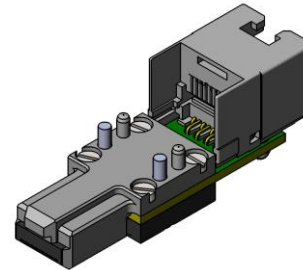
CONNECTOR INSTALLATION

Below is a image of using MA085139 Float unit with Test Connector MA036427.

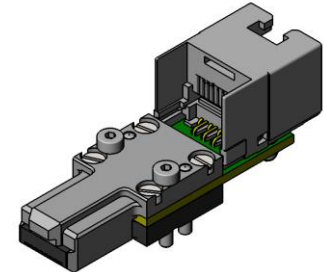


When using float with Test Connector MA014781 the mounting screws need to be installed from opposite side of default configuration. It is recommended to change the default countersunk screws to M2x12 mm cap head screws. Also dowel pins need to be pressed to opposite side.

Before:



After:



Now the connector can be installed to float unit.

