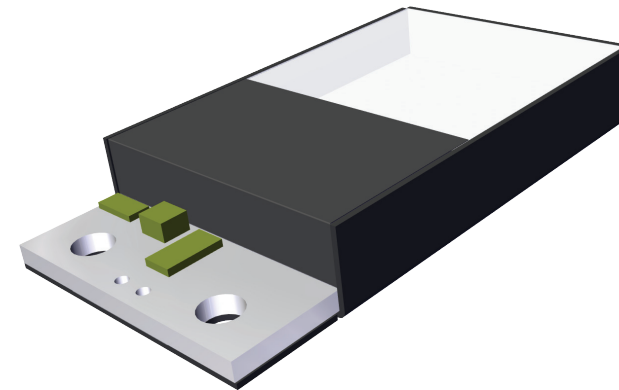


Ambient Light Source

MA009873

- High quality light source develop to test devices' ambient light sensor (ALS)
- Easy to integrate for all kind of test applications
- Produces a constant and even illumination which approximates to natural daylight
- Suitable for high volume production and R&D test enviroments alike



APPLICATIONS

Testing for ambient light sensors of all devices and other suitable test applications.

TECHNICAL CHARACTERISTICS

Dimensions:
26.2 x 48.6 x 7.4 mm
(1.03" x 1.91" x 0.29")

Weight approx. 20 g

CONTROL

Supply voltage controlled (10 - 19VDC)

INSTALLATION REQUIREMENTS

M3 screws with plastic washers, 2 pcs

INTERFACE

Input Connector Type:
JST EHR-2/ Female

CONTACT INFO

sales@bluelec.com

TECHNICAL DETAILS

Environments

Operating temperature	from -40 °C to +85 °C
Storage temperature	from -40 °C to +85 °C
Relative operating and storage humidity	from 15% to 60% non-condensing

Electrical

LED color	White
Correlated color temperature	5600 K
Input voltage range	10 - 19 VDC
Nominal supply voltage	12 VDC
Power consumption at 12 VDC	0.15 W
Current consumption at 12 VDC	11.9 mA
Power Cable length L	0.3 m, soldered to PWB
Polarity Connection	Anode (+) Brown Cathode (-) White
RoHS compliant	Yes
Case material	AlSiMgMn T6

