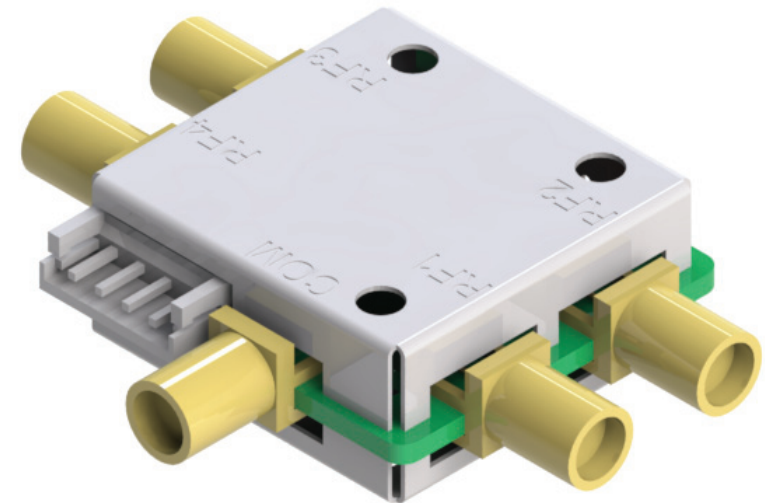


# 6GHz SP4T RF Switch I/O Controlled

TB1309

- Small size - minimal space required
- Broad frequency range (DC to 6GHz) - great performance over whole frequency range
- Low insertion loss - critical for systems that require low overall noise figure
- High isolation - reduces system measurement uncertainties
- High repeatability - Improved measurement accuracy: no random errors
- Operating life - no mechanical stress; long operating life reduces cost per cycle
- Internal terminations - no resonance in unused lines; 50 ohm load termination



## APPLICATIONS

High performance RF switch for applications which require long operating life without risking RF performance, such as high volume testing.

## RF CONNECTORS

SMA (f)

## CONTROL INTERFACE

Supply and I/O  
JST EH 4PIN (2.5 mm pitch)

Pin	Signal
1	+12VDC
2	CTRL1
3	CTRL2
4	GND

## CONTACT INFO

sales@bluelec.com

## RF AND DC SPECIFICATIONS

Operating frequency	DC - 6 GHz	
Impedance	50 ohm	
Insertion loss (typ.)	1 GHz	1.0 dB
	3 GHz	1.5 dB
	6 GHz	1.8 dB
Return loss (typ.)	1 GHz	20 dB
	3 GHz	19 dB
	6 GHz	16 dB
Isolation (typ.)	1 GHz	60 dB
	3 GHz	50 dB
	6 GHz	35 dB
Input power (RF)	1	W (CW)
Supply voltage	12	V
Supply current max (+12V)	10	mA
Switching time	<25	µs

## CONTROL TABLE

I/O		COM to			
CTRL1	CTRL2	RF1	RF2	RF3	RF4
0V	0V	ON	OFF	OFF	OFF
0V	12V	OFF	ON	OFF	OFF
12V	12V	OFF	OFF	ON	OFF
12V	0V	OFF	OFF	OFF	ON

## MECHANICAL SPECIFICATIONS

Dimensions	39.5 x 51.1 x 12.7 mm (1.56"*2.01"*0.50")
Weight	15 g (0.53 oz)

## ENVIRONMENTAL SPECIFICATIONS

Operating temperature	0-50 °C
Storage temperature	-20 ... +70 °C
Relative humidity	95 % at +40 °C

