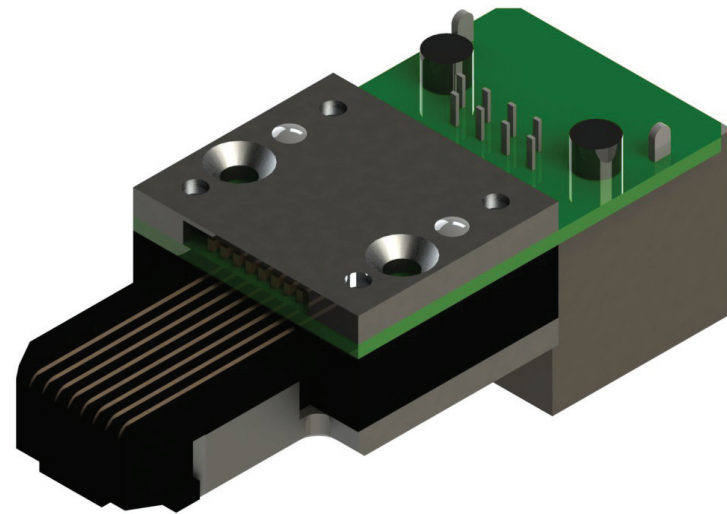


# RJ45 Test Plug Module

MA002667

- High-quality RJ45 test plug between DUT (Device Under Test) and test system
- Cutting-edge reliable, durable, and high accurate solution to replace commercial cables and connectors
- Applicable with all RJ45 connectors
- Durability for high-volume production testing



## APPLICATIONS

RJ45 interface testing of devices with RJ45 connectors, like desktop computers, laptops, televisions, digiboxes, ethernet routers, ethernet switches, and others.

Applicable for testing in high volume production, R&D laboratories, service centers, and test laboratories.

## TECHNICAL CHARACTERISTICS

Dimensions: 45\*18\*15.85 mm  
(1.77"\*0.71"\*0.63")

## INTERFACE

RJ45 plug, RJ45 (Cat6a receptacle)

## INSTALLATION REQUIREMENTS

M2 countersunk screws, positioning pins diameter 2 mm - delivered with test module

## CONTACT INFO

sales@bluelec.com

## TECHNICAL DETAILS

Product is designed to meet the electrical, mechanical and environmental performance requirements of RJ45 connector.

### Environments

Temperature	from 0 °C to +60 °C
Relative humidity	from 15% to 95% non-condensing

### Specification

<b>Electrical</b>	
PWB data lines differential impedance	100 ohm
Data speed	10 Gbit/s
Rated voltage (max.)	20 V AC (rms)
Rated current (max.)	0.5 A

### Mechanical

Durability	50000 (typical)
Mating force (typical)	12 N
Unmating force (typical)	7 N

RoHS compliant

Lead free

