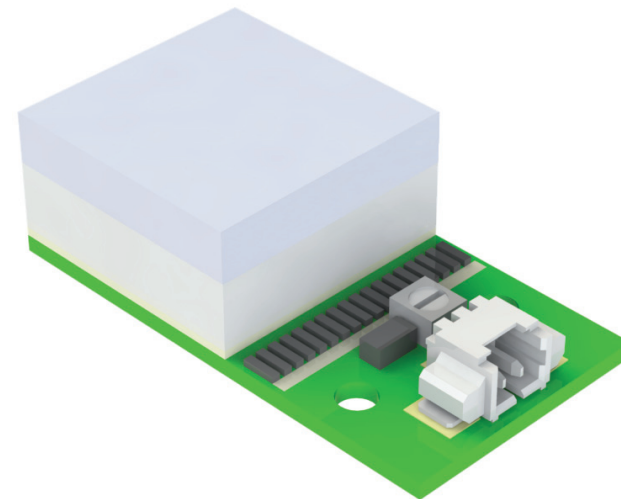


Light Source (White 15x15)

EM052157-3

- Produces constant and even illumination which approximates to natural daylight
- Factory calibrated luminance
- Designed for mobile device camera tests in production and R&D environment
- Optimised for JOT test platforms and adapters but can also be used in other test systems



APPLICATIONS

Testing for camera of mobile device, like smartphones, tablets, and digital cameras.

Suitable for testing in high-volume production, R&D laboratories, service centres, and test laboratories.

TECHNICAL CHARACTERISTICS

Dimensions:
L28 x W15 x H8.5±0.9 mm
(1.10" x 0.59" x 0.33±0.04")

INSTALLATION REQUIREMENTS

M2 screws, 2 pcs

INTERFACE

Power:
MOLEX 53261-0271
Pin 1 = Vcc
Pin 2 = GND

CONTACT INFO

sales@bluelec.com

OPTICAL SPECIFICATION AT TYPICAL 12 V SUPPLY

| Parameter | Minimum | Typical | Maximum | Units |
|-------------------------|--------------------------|--------------------------|--------------------------|---------------------|
| Luminance | 1100 | 1200 | 1300 | Cd/m ² |
| Luminance uniformity | -100 | 0 | 100 | Cd/m ² |
| Colour temperature | 5000 x=0.345, y=0.369 | 5400 x=0.335, y=0.346 | 5800 x=0.328, y=0.342 | Kelvin CIE (x,y) |
| Luminance settling time | - | - | 0.002 | Second |
| Life time | | 30 000 | | Hours |
| Light-emitting surface | | 15 x 15 | | Millimeters |

TECHNICAL DETAILS

Environments

| | |
|-------------------|-----------------------------------|
| Temperature | from +20 °C to +40 °C |
| Relative humidity | from 15% to 95% non-condensing |

Electrical

| | |
|-------------------|---------------------------|
| Supply voltage | 10-24 V, typical 12 V |
| Supply current | 6-12.5 mA, typical 8.5 mA |
| Power consumption | 0.06-0.3 W, typical 0.1 W |
| ESD protection | 2500 V |

