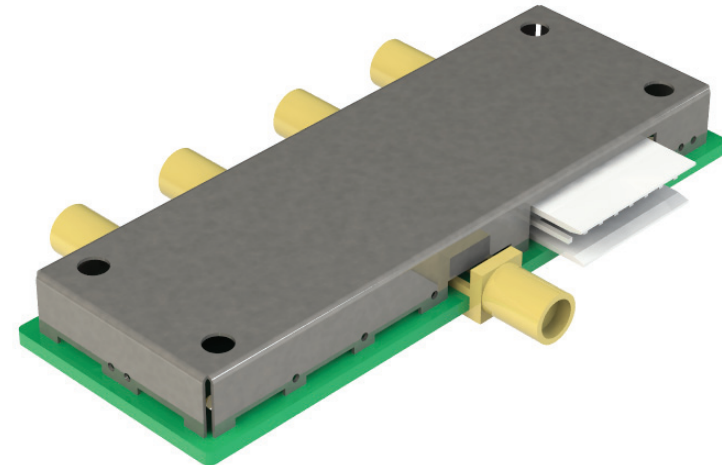


# 6GHz SP4T RF Switch I2C Controlled

RFS-777

- I<sup>2</sup>C interface: Easy control
- Broad frequency range (DC to 6GHz) - great performance over whole frequency range
- Low insertion loss - critical for systems that require low overall noise figure
- High isolation - reduces system measurement uncertainties
- High repeatability - Improved measurement accuracy: no random errors
- Operating life - no mechanical stress; long operating life reduces cost per cycle
- Internal terminations - no resonance in unused lines; 50 ohm load termination



## APPLICATIONS

High performance RF switch for applications which require long operating life without risking RF performance, such as high volume testing.

## RF CONNECTORS

SMA (f)

## CONTROL INTERFACE

Supply and I/O

HE14 8PIN

Pin	Signal
1	+5 VDC
2	A0
3	SDA
4	SCL
5	A1
6	GND
7	A2
8	GND

## CONTACT INFO

sales@bluelec.com

## RF AND DC SPECIFICATIONS

Operating frequency	DC - 6 GHz	
Impedance	50 ohm	
Insertion loss (typ.)	1 GHz	1.0 dB
	3 GHz	1.7 dB
	6 GHz	2.1 dB
Return loss (typ.)	1 GHz	20 dB
	3 GHz	19 dB
	6 GHz	16 dB
Isolation (typ.)	1 GHz	60 dB
	3 GHz	50 dB
	6 GHz	35 dB
Input power (RF)	1	W (CW)
Supply voltage	4 - 6	V
Supply current max (+5V)	10	mA
Switching time	<50	µs

## CONTROL TABLE

I2C	COM to			
	RF1	RF2	RF3	RF4
XXXXXX00	ON	OFF	OFF	OFF
XXXXXX10	OFF	ON	OFF	OFF
XXXXXX11	OFF	OFF	ON	OFF
XXXXXX01	OFF	OFF	OFF	ON

## MECHANICAL SPECIFICATIONS

Dimensions	49.05 x 82 x 10.3 mm (1.93" * 3.23" * 0.41")
Weight	25 g (0.88 oz)

## ENVIRONMENTAL SPECIFICATIONS

Operating temperature	0-50 °C
Storage temperature	-20 ... +70 °C
Relative humidity	95 % at +40 °C

