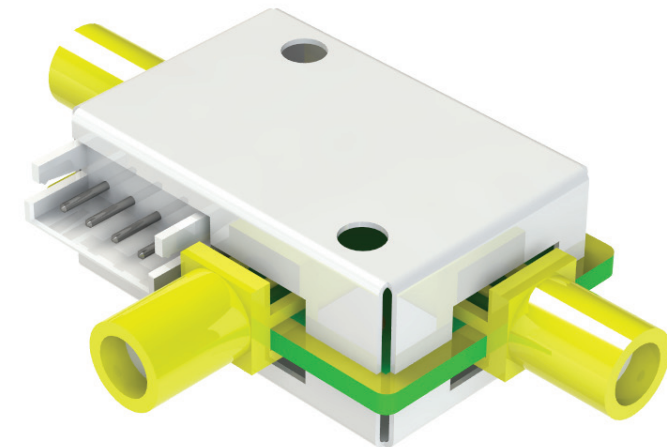


6GHz SP2T RF Switch I/O Controlled

RFS-692

- Small size - minimal space required
- Broad frequency range (DC to 6GHz) - great performance over whole frequency range
- Low insertion loss - critical for systems that require low overall noise figure
- High isolation - reduces system measurement uncertainties
- High repeatability - Improved measurement accuracy: no random errors
- Operating life - no mechanical stress; long operating life reduces cost per cycle
- Internal terminations - no resonance in unused lines; 50 ohm load termination



APPLICATIONS

High performance RF switch for applications which require long operating life without risking RF performance, such as high volume testing.

RF CONNECTORS

SMA (f)

CONTROL INTERFACE

Supply and I/O
JST EH 4PIN (2.5mm pitch)

Pin	Signal
1	+12VDC
2	CTRL1
3	NC
4	GND

CONTROL TABLE

I/O	COM to	
	RF1	RF2
CTRL1	ON	OFF
0V	ON	OFF
12V	OFF	ON

CONTACT INFO

sales@bluelec.com

RF AND DC SPECIFICATIONS

Operating frequency	DC - 6 GHz	
Impedance	50 ohm	
Insertion loss (typ.)	1 GHz	0.9 dB
	3 GHz	1.2 dB
	6 GHz	1.7 dB
Return loss (typ.)	1 GHz	21 dB
	3 GHz	20 dB
	6 GHz	19 dB
Isolation (typ.)	1 GHz	60 dB
	3 GHz	50 dB
	6 GHz	35 dB
Input power (RF)	1	W (CW)
Supply voltage	12	V
Supply current max (+12V)	10	mA
Switching time	<25	µs

MECHANICAL SPECIFICATIONS

Dimensions	31.05 x 51 x 12.7 mm (1.22"*2.01"*0.50")	
Weight	10 g (0.35 oz)	

ENVIRONMENTAL SPECIFICATIONS

Operating temperature	0-50 °C
Storage temperature	-20 ... +70 °C
Relative humidity	95 % at +40 °C

