

Flashlight Test Module

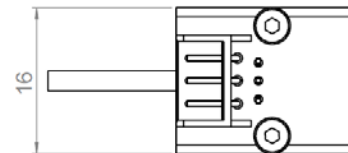
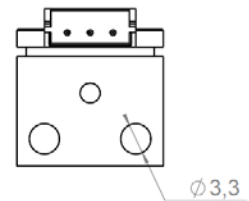
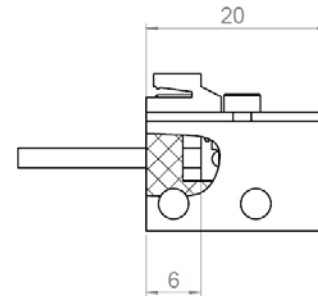
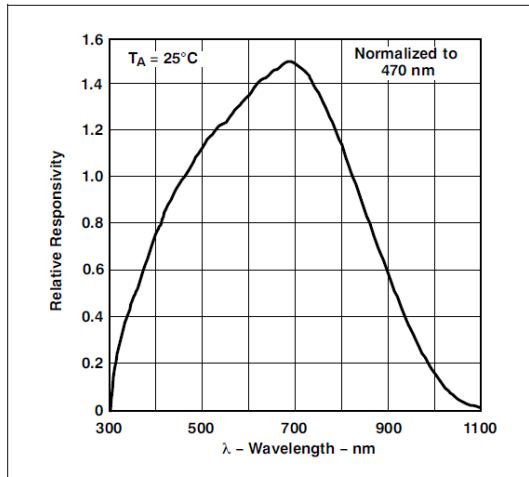
EM044505-0

EM044505-0 is a high sensitivity, low noise optical sensor.

PROPERTIES

- Fast response to visible light of 400nm to 700nm
- High irradiance responsivity, typically $1.68\text{V}/(\mu\text{W}/\text{cm}^2)$ at $\lambda_p = 645\text{nm}$
- Output with timer $>100\text{ms}$
- Sensor holder with 300mm optical cable with flying end

Typical spectral responsivity of the sensor:



Connector:
JST S3B-EH
Pin 1 = GND
Pin 2 = +5V
Pin 3 = OUT

